

iData T5 High performance handheld mobile terminal

Powerful performance, capable of handling high-intensity operational requirements

iData T5, with its powerful core performance and comprehensive hardware configuration, enables devices to perform complex tasks such as data collection and task management effectively in various demand scenarios; Paired with iData high-performance scanning engine, the device can efficiently and accurately collect one-dimensional and two-dimensional codes of various code systems; A detachable battery+backup solution has been designed to meet the endurance requirements for continuous operations, allowing the equipment to replace batteries without shutting down, ensuring the consistency of operations.

Powerful performance, easy to deal with complex tasks comprehensively

Using high-performance octa-core CPU and larger memory and flash configurations to provide powerful processing performance; Paired with the latest Android 15.0 AER, frontline workers can enjoy the same user experience as mainstream smartphones; In terms of professional operation, it also allows workers to pre-install and run more professional programs, easily supporting more businesses and becoming excellent and portable mobile processing terminals.

Scanning performance has been further improved, making scanning tasks more versatile

Using iData's latest generation scanning engine, it can quickly capture almost any one-dimensional/two-dimensional barcode; High performance scanning heads have excellent scanning angles and accuracy, which can broaden more complex work scenarios; The scanning head design on the top allows workers scan and view information easily.

Longer battery life and more stable safety protection

The newly upgraded 5100mAh detachable battery design, combined with backup power support, greatly improves the device's endurance. The device can be replaced with a new battery without shutting down and continue to be used; Equipped with IP67 protection rating and excellent drop protection, the device can provide stable and durable operation in various environments.



Store
management



Inventory
management



E-commerce
shipment



Production
management

*Due to limitations in the testing environment and Antutu version, specific benchmark data will be based on actual testing

T5 Technical Specifications

System Configuration

Processor	Octa-core 2.4 GHz high-performance processor
Operating System	Android 15.0 AER
Memory (ROM+RAM)	64GB + 6GB (standard), 128GB + 8GB (optional)
SIM	Select two out of three available SIM card slots, support dual SIM and dual standby * two cards can be inserted at the same time, Nano SIM card + Nano SIM card /Nano SIM card +TF card
E-SIM	Optional
Expansion Slot	Micro SD card (up to 512GB)
Display Screen	6 inches, resolution: 1440*720 pixels, IPS(standard) 6 inches, resolution: 2160*1080 pixels, IPS(optional)
Touch Screen	Industrial capacitive screen, support wet-hand operation/glove mode/multi-touch
Camera	16MP rear camera, support auto-focus/PDAF, 8MP front camera
Flashlight	1A flashlight
Keypad	6 keys in total: side scan key *2, side power key *1, volume key*2, custom key*1
Battery	3.87V lithium battery, with 5100mAh, detachable, backup battery(optional); *Executive standard: GB31241-2022
Audio	Built-in dual microphone (noise-canceling microphone)
Charging Method	Type-C charging and pin port charging, support 18W fast charging
Reminder	Vibration reminder/LED reminder/Audio reminder
Vibrating Motor	Built-in vibrating motor
Sensors	Standard: G-sensor/ Proximity sensor/Light sensor; Optional: Gyroscope/geomagnetic sensor/high-precision barometer
Intercom Function (Optional)	Support one-button PTT calls

Structure Parameter

Dimension (L*W*D)	163mm*77.7mm*14.95mm (thickest part: 17.8mm)
Weight	290g (including the battery)

Environmental Parameter

Working Temperature	-20°C - 55°C *Do not charge under low temperature conditions for the safety concerns
Storage Temperature	-40°C - 70°C (without the battery)
Humidity	0 - 95% (no moisture condensation)
Drop Specification	Multiple drops to concrete floor from the height of 1.5m
Roller Drop Specification	1000 times of roller drops from a height of 0.5 meter
Ingress Protection	IP67
ESD Protection	±15KV (air discharge), ±8KV (contact discharge)

Communication Interface

USB Interface	Type-C USB3.0 (with headset function) *1
OTG Interface	Support

Scanning Engine

Barcode Type	It can scan one-dimensional / two-dimensional barcodes
Scanning Accuracy	≥3.33mil
Scanning Angle	Pitch: ±60°; Skew: ±45°; Tilt: 360°
View Angle	Horizontal: 44.3°, Vertical: 28.4°, Diagonal: 51°
Motion Error Tolerance	8m/s

Communication Transmission

WWAN (Network Frequency)	China & Eurasian version: 2G: B2/B3/B5/B8 3G: WCDMA: B1/B2/B5/B6/B8/B19 CDMA 1X EVDO BC0 4G: FDD-LTE: B1/B2/B3/B5/B7/B8/B18/B19/B20/B28AB/B66 TDD-LTE: B34/B38/B39/B40/B41(200M)/B42/B43 5G: N1/N3/N5/N7/N8/N20/N28/N38/N41(PC2)/N66/N77/N78/N79 American version: 2G: B2/B3/B5/B8 3G: B1/B2/B4/B5 CDMA 1X EVDO BC0/BC1 4G: FDD-LTE: B1/B2/B4/B5/B7/B12/B13/B17/B25/B26/B66/B71 TDD-LTE: B38/B41(200M) 5G: N2/N5/N7/N12/N13/N25/N26/N38/N41/N48/N66/N70/N71/N77/N78/N79
WWAN (Data Service)	GSM/GPRS/EDGE/UMTS/HSPA/HSPA+/WCDMA/TDD-LTE/FDD-LTE/SA/NSA/Sub6
WLAN Function	Wi-Fi 6 Wi-Fi 802.11 a/b/g/n/r/ac/ax/d/e/h/i/j/k/v/w (2.4G+5G dual band), support fast roaming
Bluetooth	Bluetooth 5.2, support BLE
GPS	GPS/AGPS/BDS/Galileo/GLONASS/QZSS

NFC (standard)

Working Frequency	13.56 MHz
Reading Distance	Within 60 mm
Communication Protocol	ISO14443A/14443B/15693

Development Support

Programming Language	Java
Development API	iScan API (Scanning Development Kits), Device API (Device Management/Configuration Development Kits), Android Standard Interface
Development Tool	Eclipse/Android Studio

Accessories

Standard Accessories	USB cable*1, back strap *1, power adapter*1, battery*1
Optional Accessories	2-in-1 charging cradle, Pistol grip, 4-slot charging cradle, 4-slot battery charging cradle, protective case, protective film



Each product comes with a pack of practical and cost-effective accessories

USB Cable

Type-C to USB cable, 1m in length, support charging and data transmission



CHA-USBC-GNR

Device-back Strap

Attach on the device back to help you hold the device easily and firmly, avoid accidental drops

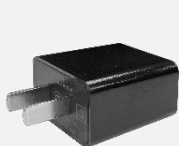


MNT-BS-T5

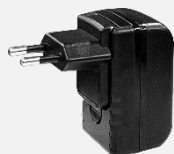
Power Adapter

Input voltage 100-240V, output 5V2A. Support plug types of China/Europe/UK/US/Australia, match with CHA-USBC-GNR

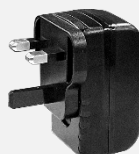
ps: you may have one of the power adapters



CHA-PWAD-
GNR-5V2A-CN



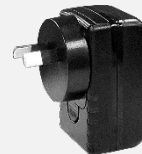
CHA-PWAD-
GNR-5V2A-EU



CHA-PWAD-
GNR-5V2A-UK



CHA-PWAD-
GNR-5V2A-US



CHA-PWAD-
GNR-5V2A-AU

The information of iData products and software service may be subject to change without notice. Please contact your iData sales representative for the latest details.



Official Website

WUXI IDATA TECHNOLOGY CO., LTD.

Address: Floor 11, Building B1, Wuxi (Binhu) National Sensing Information Center,
No.999 Gaolang East Road, Wuxi City, Jiangsu Province, P.R.C.

E-mail: sales@idataglobal.com

Website: www.idataglobal.com

Improve management efficiency of devices and operational level of enterprises

Battery

5100mAh, detachable design. Standard: GB31241-2022

ps: every product comes with 1 unit, you can purchase extra unit



CHA-BTRY-T5-5100MA

2-in-1 Charging Cradle

Support maximum charging of 1 main unit+1 battery at the same time. Match with multifunctional 5-slot base. Support plug types of China/Europe/UK/US/Australia



CHA-BTC21-T5

4-slot Charging Cradle

Support maximum charging of 4 main units at the same time.

Support plug types of China/Europe/UK/US/Australia



CHA-CRD4S-T5

4-slot Battery Charging Cradle

Support maximum charging of 4 batteries at the same time. Support plug types of China/Europe/UK/US/Australia



CHA-CRD4B-T5

The information of iData products and software service may be subject to change without notice. Please contact your iData sales representative for the latest details.



Official Website

WUXI IDATA TECHNOLOGY CO., LTD.

Address: Floor 11, Building B1, Wuxi (Binhu) National Sensing Information Center,
No.999 Gaolang East Road, Wuxi City, Jiangsu Province, P.R.C.

E-mail: sales@idataglobal.com

Website: www.idataglobal.com

T5 Optional Accessories for Portability

Accessories Guide

Improve device portability and comfort for users, boost working efficiency

Pistol Grip

Pistol grip for main unit. Execute barcode scanning by pressing the grip trigger. Only those main units with pin port on the back are compatible



MNT-PG-T5

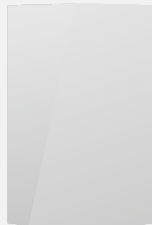
T5 Optional Accessories for Protection

Accessories Guide

Lower risks of malfunction during usage, extend lifespan of devices

Protective Film

Protective film for touchscreen. It can protect the screen from cracking or being scratched in case there's any accidental drops or impact during usage



PRT-PTF-T5

Protective Case

Protective case for the main unit. It can prevent the malfunction of main unit in case there's any accidental drops or impact during usage



Right angle: PRT-PTC-T5

The information of iData products and software service may be subject to change without notice. Please contact your iData sales representative for the latest details.



Official Website

WUXI IDATA TECHNOLOGY CO., LTD.

Address: Floor 11, Building B1, Wuxi (Binhu) National Sensing Information Center,

No.999 Gaolang East Road, Wuxi City, Jiangsu Province, P.R.C.

E-mail: sales@idataglobal.com

Website: www.idataglobal.com