



iData J20 Series

Ultra-rugged Scanner

Improve the ability to trace parts continuously in production lines

iData J20 is an ultra-rugged wired/Bluetooth scanner that adopts iData's latest scanning technology, surface light source illuminating technology, and multi-spectral technology to help workers in production lines scan 1D/2D barcodes on parts quickly; The durable outer appearance design enables the equipment to cope with any harsh environment, and to survive in a long-term uninterrupted operation. It improves the traceability efficiency of production-line workers and levels up the digital management capabilities of enterprises.

Excellent scanning technology, improves the capture efficiency of DPM codes

Adopts new generation quad-core decoding core and iData decoding algorithm technology, especially optimization for DPM code. Easily captures blurred, damaged, low-contrast barcodes such as dot etching, laser etching, chemical etching, etc., improving the efficiency of production line tracing of raw materials, parts, etc.

Advanced illumination technology, suitable for more environments and textures

The advanced illumination technology provides surface light sources and multi-spectral lighting, which can illuminate barcodes in different light environments effectively and evenly, reduce the reflective interference caused by materials, enhance imaging contrast and image quality, and make decoding way easier.

Ultra-rugged design, ensure an uninterrupted operation

Adopts a higher standard of anti-drop, anti-roll, dustproof, and waterproof design than ordinary scanners. When the equipment is operating in a harsh environment, even if it encounters accidents such as drops, impact, and water ingress, it remains functional and keeps the on-site operation going continuously.



J20-BT

J20



Home appliance
assembly



Auto
manufacturing



Parts
management



Electronic
manufacturing

J20 Series Technical Specifications

Performance Parameter

Image Sensor	1280*1024 pixels
Fill-in Light	Surface light source: Red, blue Dot light source: White *2, one is short distance, the other is long distance

Physical Parameter

Size (H*W*D)	195.25*73.55*112.64mm
Weight	Wired scanner: 363.5g Wireless scanner: 420.5g Wireless base: 350.5g
Working Voltage	USB-port version: 5V±5% (DC)
Current	250mA
Interface	RJ45-USB, RJ45-RS232
Reminder	Buzz reminder: 100dB+ LED reminder: Decoding succeeded (Succeeded: Green light; Failed: no light) Vibration reminder
Housing Material	PC+GF+TPU
Key Life Span	5 million times

Code System

1D	Codabar, Code 11, Code 128, Code 32, Code 39, Code 93, EAN 13, EAN 8, UPC-A, UPC-E, IATA 2 of 5, Interleaved 2 of 5, Matrix 2 of 5, MSI/Plessey, GS1 DataBar, etc
2D	Aztec, Data Matrix, Micro PDF 417, PDF 417, QR, Micro QR etc

Decoding Range

Decoding range	HD(High density)	SR(Standard range)
3.33mil Code128	3cm~11.5cm (1.18inch to 4.53inch)	10cm~14cm (3.94inch to 5.51inch)
10.83mil Code128	0.5cm~12cm (0.20inch to 4.72inch)	0cm~54cm (0inch to 21.26inch)
20mil Code128	2cm~31cm (0.79inch to 12.20inch)	2cm~114cm (0.79inch to 44.88inch)
5mil QR Code	3cm~8cm (1.18inch to 3.15inch)	/
20.83mil QR Code	1.5cm~21cm (0.59inch to 8.27inch)	0cm~54cm (0inch to 21.26inch)
Decoding range	XD (Ultra-density)	
4.17mil Data Matrix	1.5cm~3.5cm (0.59inch to 1.38inch)	
5.83mil QR Code	0.5cm~4.5cm (0.20inch to 1.77inch)	
3.3mil code128	0.5cm~4.5cm (0.20inch to 1.77inch)	
10mil code128	0.5cm~8.5cm (0.20inch to 3.35inch)	

Scanning Performance

Scanning Accuracy	≥3mil
Scanning Angle	(pitch): ±60°; (skew): ±60°; (tilt): 360°
View Angle	Horizontal: 43.4°, Vertical: 33°, Diagonal: 54°
Minimum Reading Contrast	10%
Motion Tolerance	4m/s

Environment Parameter

Working Temperature	-20°C~50°C
Storage Temperature	-40°C~70°C
Humidity	5%~95% (No condensation)
Ingress Protection	IP68
Drop Specification	Multiple drops to concrete floor from the height of 3m
Roller Drop Specification	1000 times of roller drops from a height of 1 meter
Ambient Light	0Lux~100000Lux
ESD Protection	±15KV (air discharge), ±8KV (contact discharge)

Wireless Transmission Performance BT (Bluetooth version)

Bluetooth	Bluetooth 5.0
Frequency Band	2402MHz~2480MHz
Transmission Distance	Up to 70m in open space
Communication Mode	Base HID/Base CDC/ Base RS232

Scanning Configuration (Bluetooth version)

Battery Capacity	3250mAh, detachable
Charging Time	4 Hour (5V/2A)
Working Time	≥12h
Scan Times	>100,000 times after fully charged

Accessories

Standard Accessories	USB-port version: RJ45 to USB-A data power supply cable (cable length:1.8m)*1, 5V adapter *1
Optional Accessories	RJ45 to RS232 (cable length: 2m)

The information of iData products and software service may be subject to change without notice. Please contact your iData sales representative for the latest details.



Official Website

WUXI IDATA TECHNOLOGY CO., LTD.

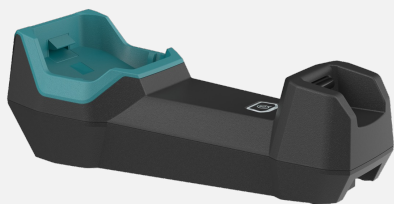
Address: Floor 11, Building B1, Wuxi (Binhu) National Sensing Information Center,
No.999 Gaolang East Road, Wuxi City, Jiangsu Province, P.R.C.

E-mail: sales@idataglobal.com

Website: www.idataglobal.com

J20 Series Accessories

Wireless base



CHA-EXTD-J20(301140016)

Power adapter



CHA-PWAD-GNR-5V2A-CN(301040033)

Serial cable RS232



CHA-RS232-GNR(301030062)

Data cable USB



CHA-USBC-GNR(301030062)

Mounting cradle



MNT-MC-GNR(301020025)

4-slot battery charging cradle



CHA-CRD4B-GNR(C01010441)

The information of iData products and software service may be subject to change without notice. Please contact your iData sales representative for the latest details.



Official Website

WUXI IDATA TECHNOLOGY CO., LTD.

Address: Floor 11, Building B1, Wuxi (Binhu) National Sensing Information Center,
No.999 Gaolang East Road, Wuxi City, Jiangsu Province, P.R.C.

E-mail: sales@idataglobal.com

Website: www.idataglobal.com